

Region At-A-Glance

Region Description

The four watersheds within the Region are the Cache and Putah Creek watersheds and portions of the Sacramento-Stone Corral, and Lower Sacramento watersheds. All drain to the lower Westside portion of the Sacramento River.

www.westsideirwm.com

Counties Within the Region

The Region encompasses all of Yolo County and portions of Lake, Napa, Solano, and Colusa Counties.

Governance Description

The Westside IRWM Coordinating Committee formed in 2009 and includes Lake County Watershed Protection District, Napa County Flood Control and Water Conservation District, Solano County Water Agency, and the Yolo Subbasin Groundwater Agency. The Coordinating Committee was formed through a Memorandum of Mutual Understanding and is comprised of members and alternates from each member organization. Decisions are made with a simple majority vote.

Population Served

430,000

IRWM Funding Brought to the Region

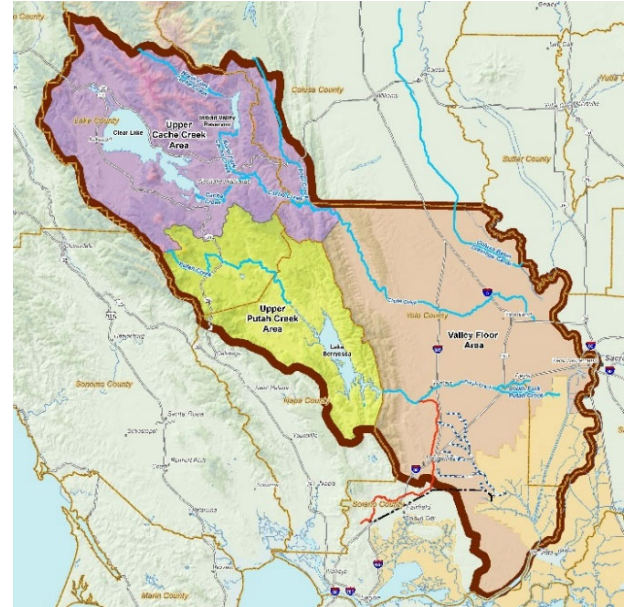
\$16,637,792

Amount of Funding Leveraged by Locals

\$5,670,288

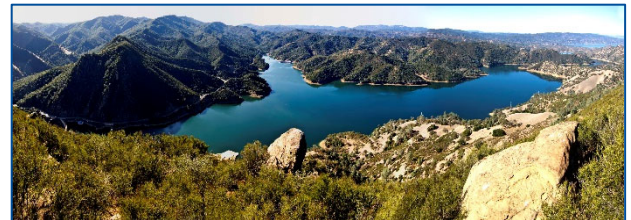
California Senate and Assembly Districts

Assembly Districts: 4, 11
Senate Districts: 2, 3, 4, 6



Top Region Priorities

- Acknowledge and respect the cultural values and resources in the Region.
- Improve water-related public health and emphasize improvements for populations most in need.
- Improve watershed and ecosystem education and awareness.
- Preserve, improve, and manage water quality for beneficial uses.
- Protect and enhance habitat and biological diversity.
- Provide reliable water supplies of suitable quality for multiple uses.
- Reduce risks of disruptive disturbances including fire and flood.



Lake Berryessa, Napa County, photo credit: Ken Davis

Region Successes and Highlights

1. The Westside Regional Water Management Group developed a small grant program to help accomplish the vision of the Westside IRWMP. The small grant program disperses funds as they are available to projects or programs that meet the goals and objectives of the IRWMP. Projects must be in the Westside Sac IRWM project list to be eligible.
<https://www.westsideirwm.com/projects/>
2. The Westside Sacramento Coordinating Committee completed a Brownfields Coalition Assessment Project that engaged communities in the Cache Creek and Putah Creek watersheds about abandoned mercury mine sites and other contaminated sites. Brownfields are lands contaminated by former industrial operations that pose significant public health risks and environmental threats.

Region Contact

Contact Name: Kate Reza

Email: reza@yolorcd.org

Title: WS IRWM Admin. Coordinator

Phone: (707) 321-8638

Website:
www.westsideirwm.com

INTEGRATED REGIONAL WATER MANAGEMENT

The Path to a Resilient Water Resources Future



History

In 2002, the State Legislature passed the Integrated Regional Water Management (IRWM) Planning Act (SB 1672) to encourage local entities to improve water quality and water supply reliability to meet the state's overall agricultural, domestic, industrial and environmental water needs. IRWM Regions are self-organized, geographically based groups, and the 48 regions serve 99% of California's population.

A Unique Approach With Multi-Benefit Results

IRWM is more than a grant program. It is an established structure that brings together cities, counties, water districts, community and environmental groups, Tribes and others to build diverse partnerships that write regional plans, construct infrastructure projects, and implement water conservation and water-energy savings programs on a regional scale. This approach increases regional self-reliance, reduces conflict, and manages water to achieve climate resilience.

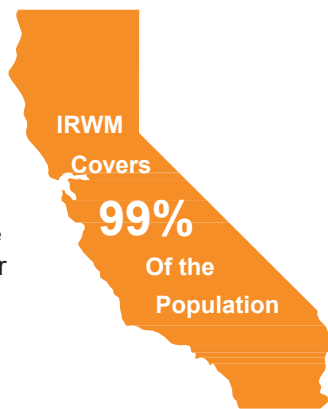
IRWM differs from traditional approaches to water resource management by integrating all facets of water management and climate solutions to achieve multi-benefit results.



The Future of California's Resilience

IRWM Regions have created regional planning capacity that strongly positions them as the best vehicle in planning for future climate resiliency as envisioned in the Water Resilience Portfolio.

The State should continue to leverage this unique tool through investment in IRWM.



State and Local Investments

Locals invest over \$4 for every \$1 invested by the State.

Propositions 50, 84 and 1 have supported more than 1,300 multi-benefit projects. Proposition 1 has specifically targeted disadvantaged communities and Tribes.

Leveraging State Funding

\$1.45 B
State Funds

\$5.6 B
Local Match

7 Benefits of IRWM

#1 LEVERAGES funding sources

#2 PROMOTES regional governance

#3 INCENTIVIZES multi-benefit projects

#4 DISSOLVES water management silos

#5 INVOLVES Tribal governments and underrepresented communities

#6 ENCOURAGES diverse stakeholder collaboration

#7 INTEGRATES climate change in comprehensive plans

Other Resources

Roundtable of Regions:
www.roundtableofregions.org

Department of Water Resources:
water.ca.gov/Programs/Integrated-Regional-Water-Management

ACWA IRWM Policy Principles:
www.acwa.com/wp-content/uploads/2019/08/PP-Integrated-Regional-Water-Management-IRWM-9-11.pdf